

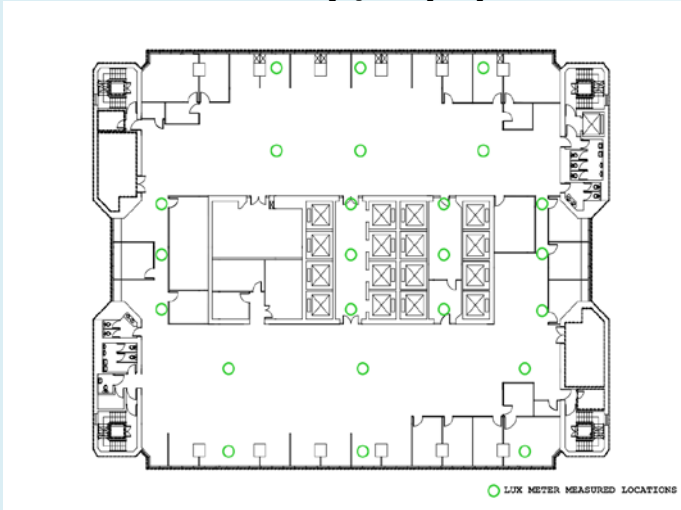
# Retro-commissioning (RCx)

## Example 13 – Lighting System

- ESO: To adjust lighting level



### Facility / Equipment



### Observation

- In an office, the lighting level at different functional areas have been reviewed.
- Check the measurement results against current facility requirement and some international standard
- T5 1500 fluorescent tubes installed (each with 35W)

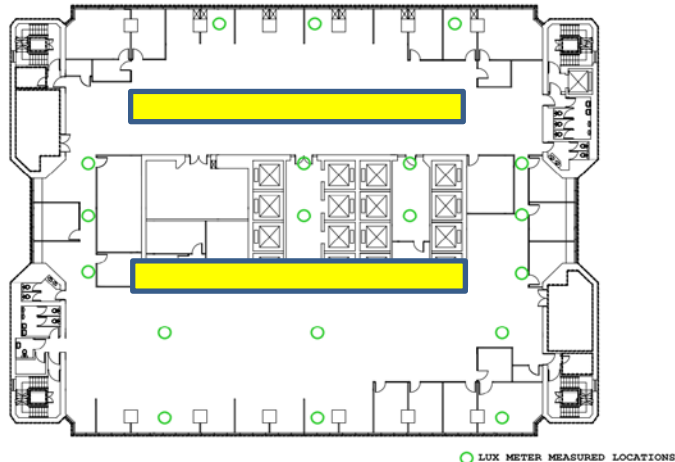
# Retro-commissioning (RCx)


## Example 13 – Lighting System

➤ ESO: To adjust lighting level



### Findings



 Corridor where delamping can be taken



### Recommendation

- About 5 nos. of 1500 T5 fluorescent can be delamped along the corridor as highlighted
- Annual electricity consumption saving  
= 275 no. of fluorescent tubes x 35w x 8hr x  
x 240 days  
= 18,480kWh